

Start Here

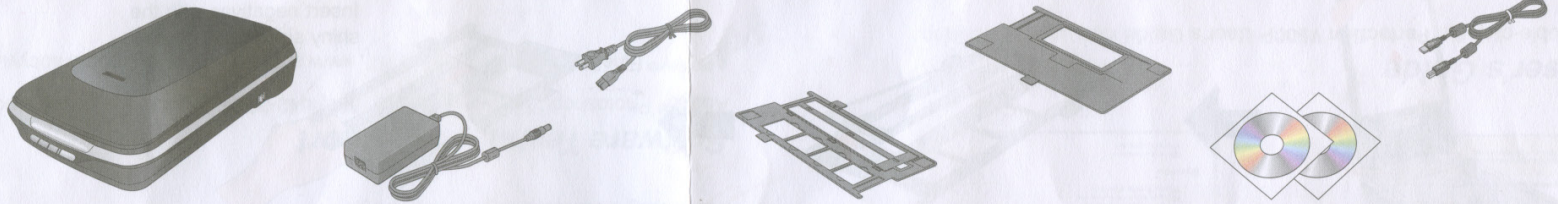


410983100

Epson Perfection® V500 Photo

1 Unpack

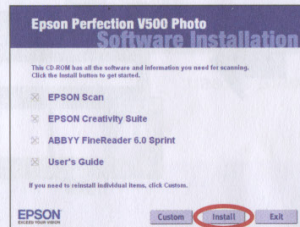
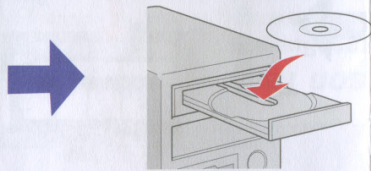
Unpack and remove protective tape.



2 Install software

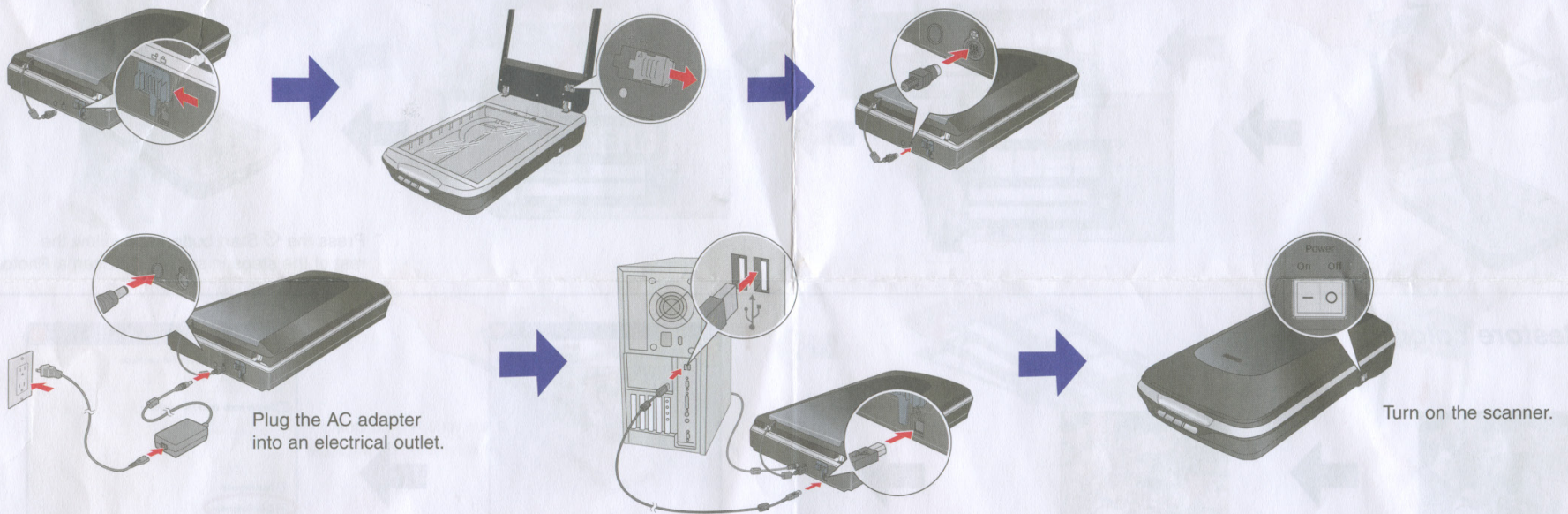


Do not connect the USB cable yet.



Click **Install** and follow the on-screen instructions.
Windows Vista™:
Click **Run Epsetup.exe** when prompted.

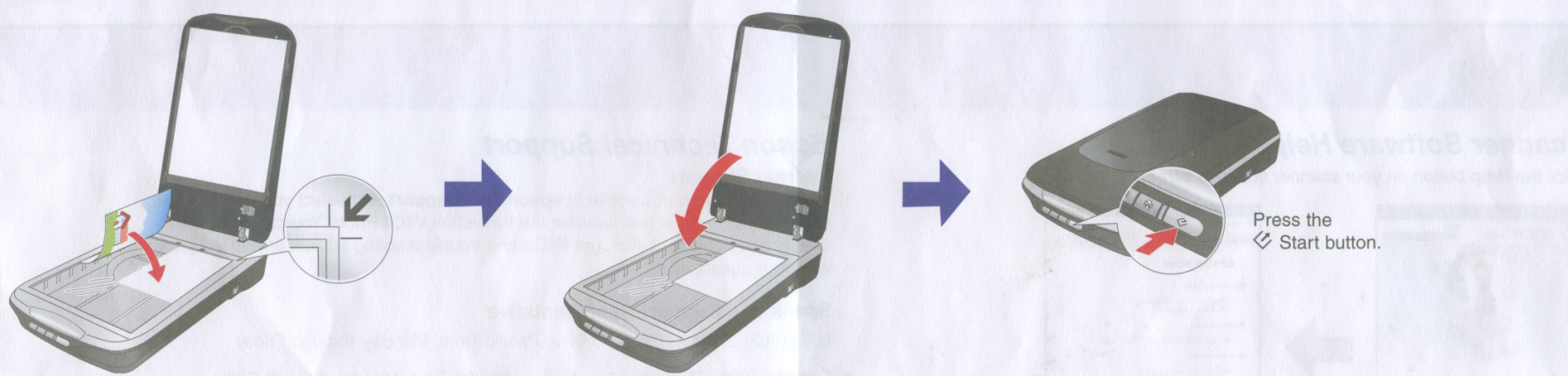
3 Connect and turn on



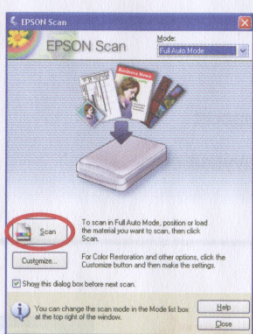
Plug the AC adapter into an electrical outlet.

Turn on the scanner.

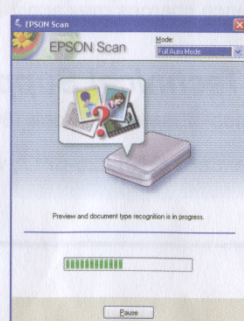
4 Scan a photo



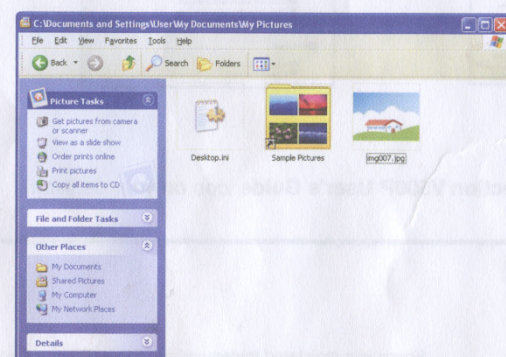
Press the Start button.



Click **Scan**.



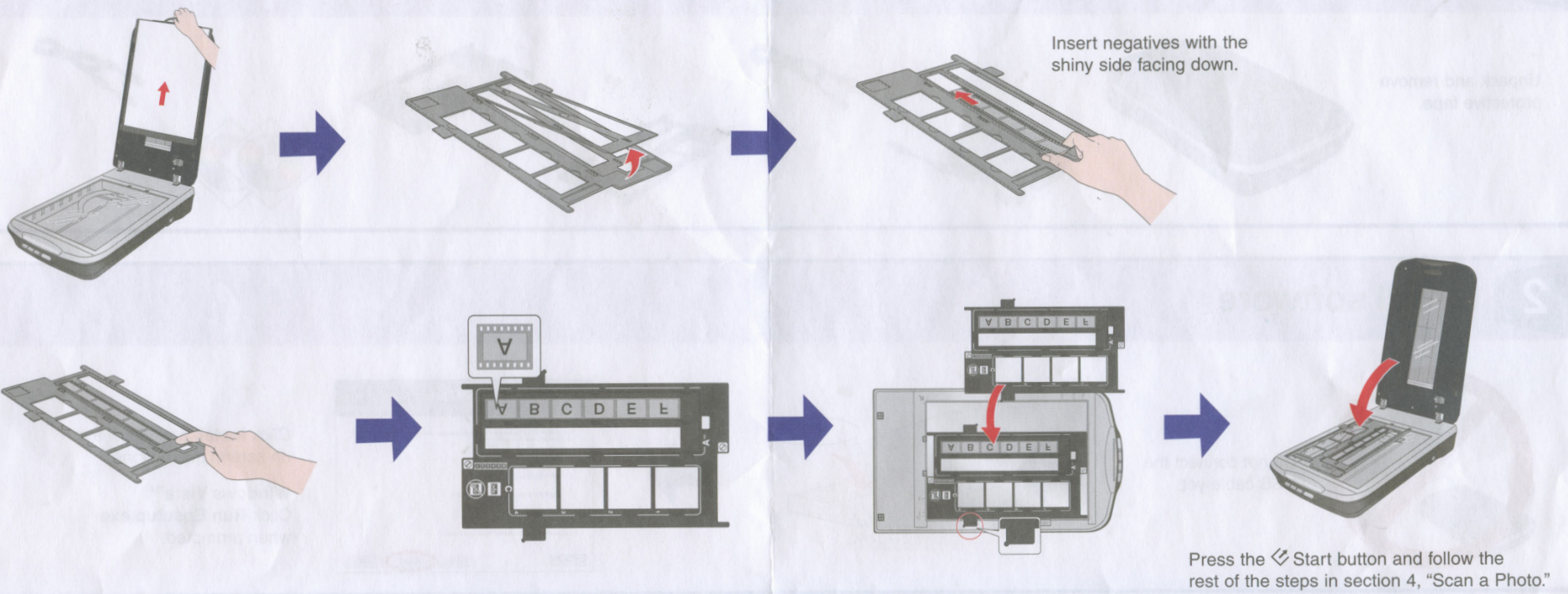
Epson Scan scans your photo in **Full Auto Mode**. Wait for your scan to finish.



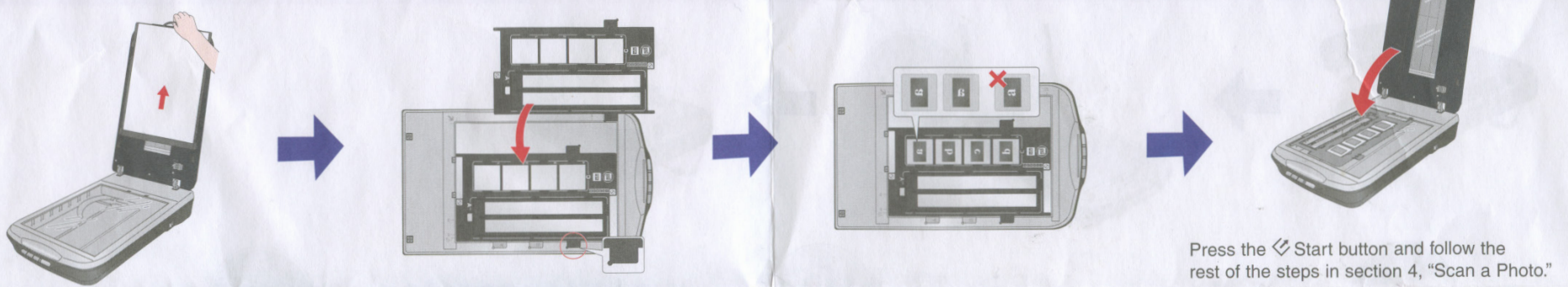
View your photo in **Pictures** or **My Pictures**.

Do more

Scan film



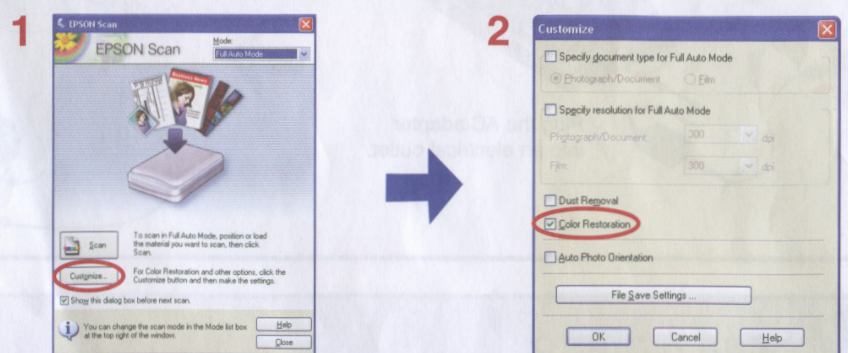
Scan slides



Restore color



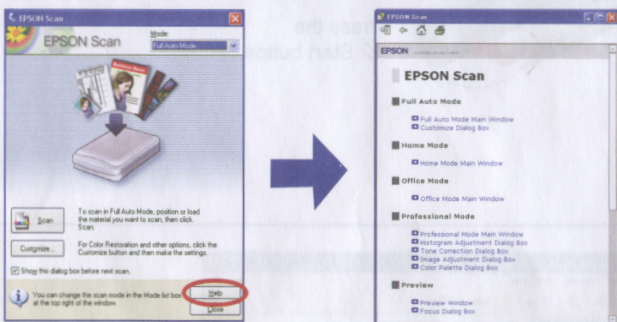
You can also optimize your scans with the Enhanced Backlight Correction and Digital Dust Removal features. See your on-screen *User's Guide* for details.



? Help

Scanner Software Help

Click the **Help** button on your scanner software screen.



User's Guide

Double-click the **Perfection V500P User's Guide** icon on your desktop.

Epson Technical Support

Internet Support

Visit Epson's support website at epson.com/support and select your product for solutions to common problems for the Perfection V500 Photo. You can download drivers and documentation, get FAQs and troubleshooting advice, or e-mail Epson with your questions.

Speak to a Support Representative

U.S.: (562) 276-4382, 6 AM to 6 PM, Pacific Time, Monday through Friday

Canada: (905) 709-3839, 6 AM to 6 PM, Pacific Time, Monday through Friday

Toll or long distance charges may apply.

Software Technical Support

Adobe® Photoshop® Elements: Phone (800) 642-3623, www.adobe.com/support

ABBYY® FineReader®: (510) 226-6717, www.abbyyusa.com, support@abbyyusa.com

EPSON
EXCEED YOUR VISION

Epson is a registered trademark and Exceed Your Vision is a trademark of Seiko Epson Corporation. Perfection is a registered trademark of Epson America, Inc. General Notice: Other product names used herein are for identification purposes only and may be trademarks of their respective owners.
Epson disclaims any and all rights in those marks.
© 2007 Epson America Inc. 5/07 CPD-23864
Printed in Singapore 10.06-10 M-03

digital
ICE
technology

Energy
ENERGY STAR