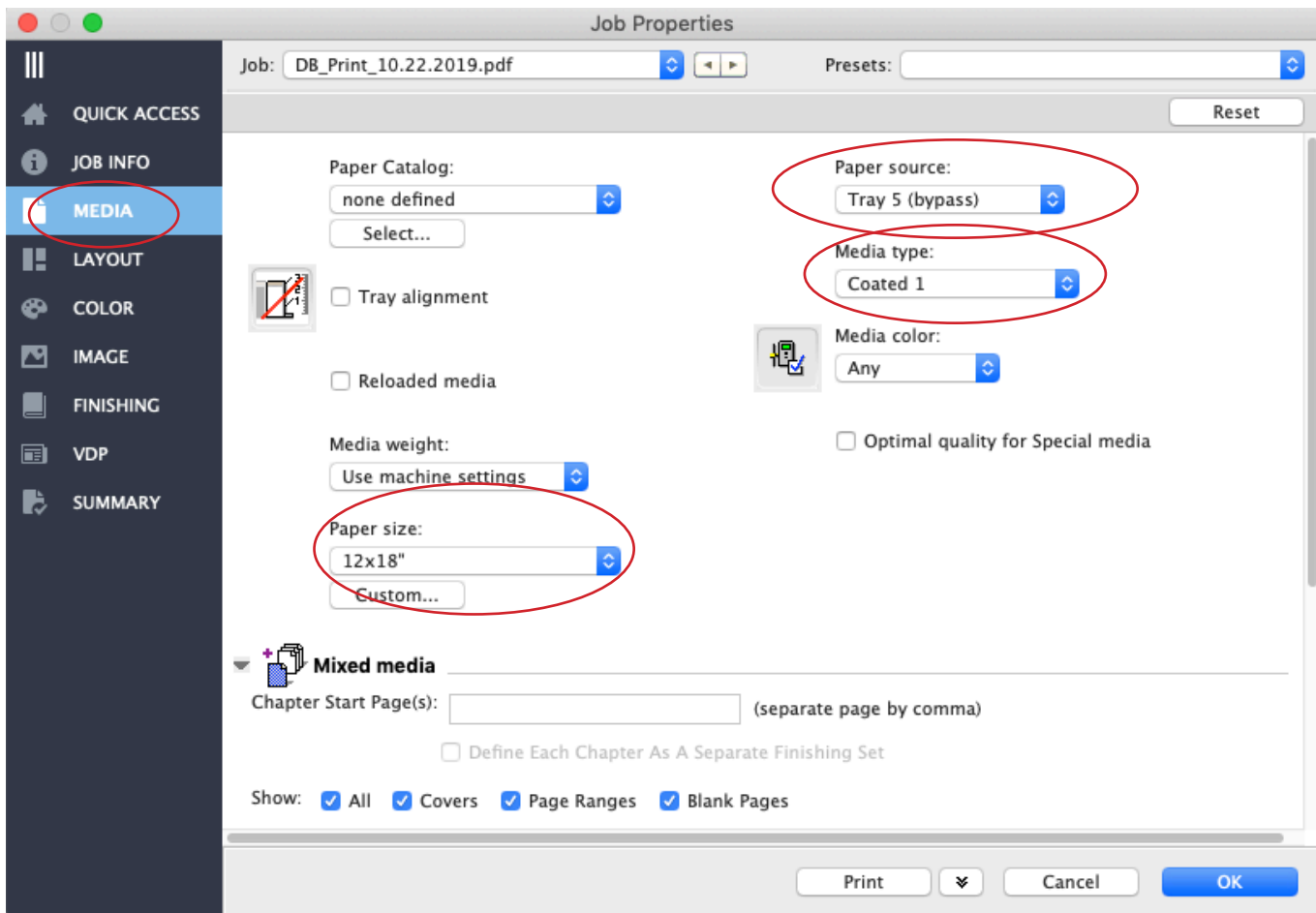


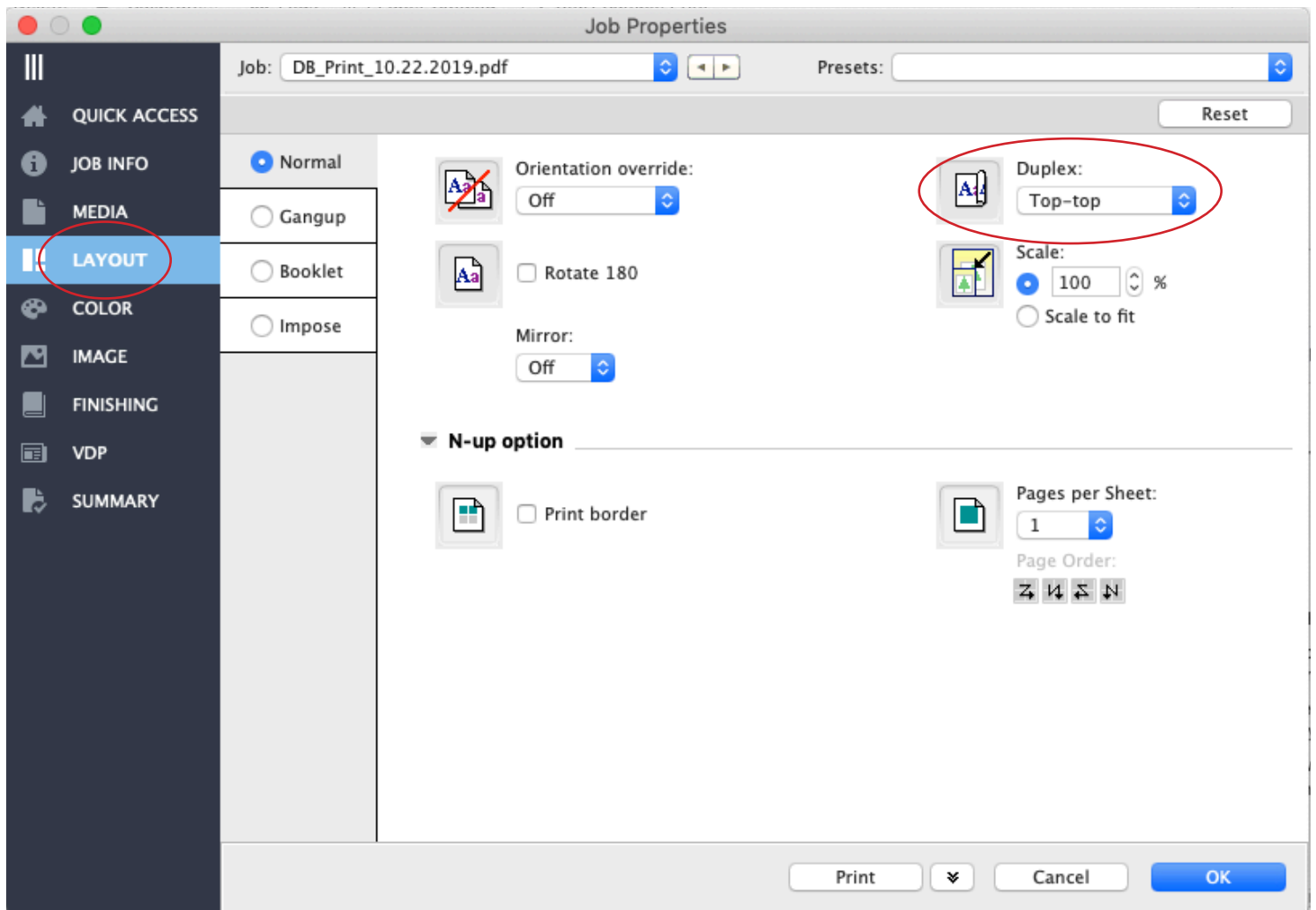
PART 2 PRINTING THE INTERIOR PAGES OF YOUR MAGAZINE:  
At the Docucolor workstation

1. Drag your PDF file to the HELD queue.
2. Select your job and click on Properties (or right click on the file >> Properties)
3. Under the MEDIA section:

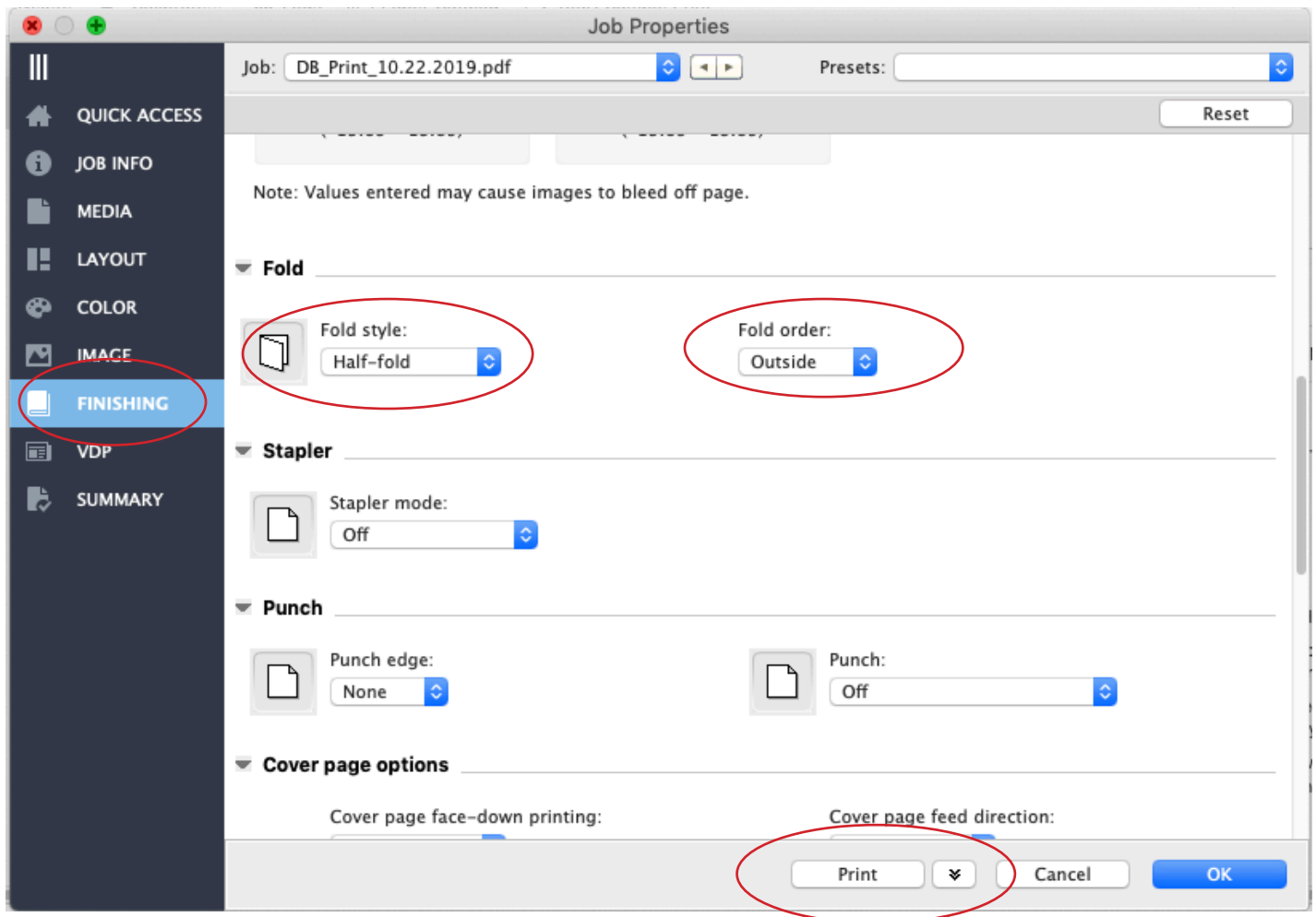


The screenshot shows the 'Job Properties' dialog box. The left sidebar has a dark blue background with white text and icons. The 'MEDIA' option is highlighted with a red circle. The main area has a light gray background. The 'Paper Catalog' dropdown is set to 'none defined'. The 'Paper source' dropdown is set to 'Tray 5 (bypass)'. The 'Media type' dropdown is set to 'Coated 1'. The 'Media color' dropdown is set to 'Any'. The 'Paper size' dropdown is set to '12x18\".

4. Under the LAYOUT section:



4. Under the FINISHING section:

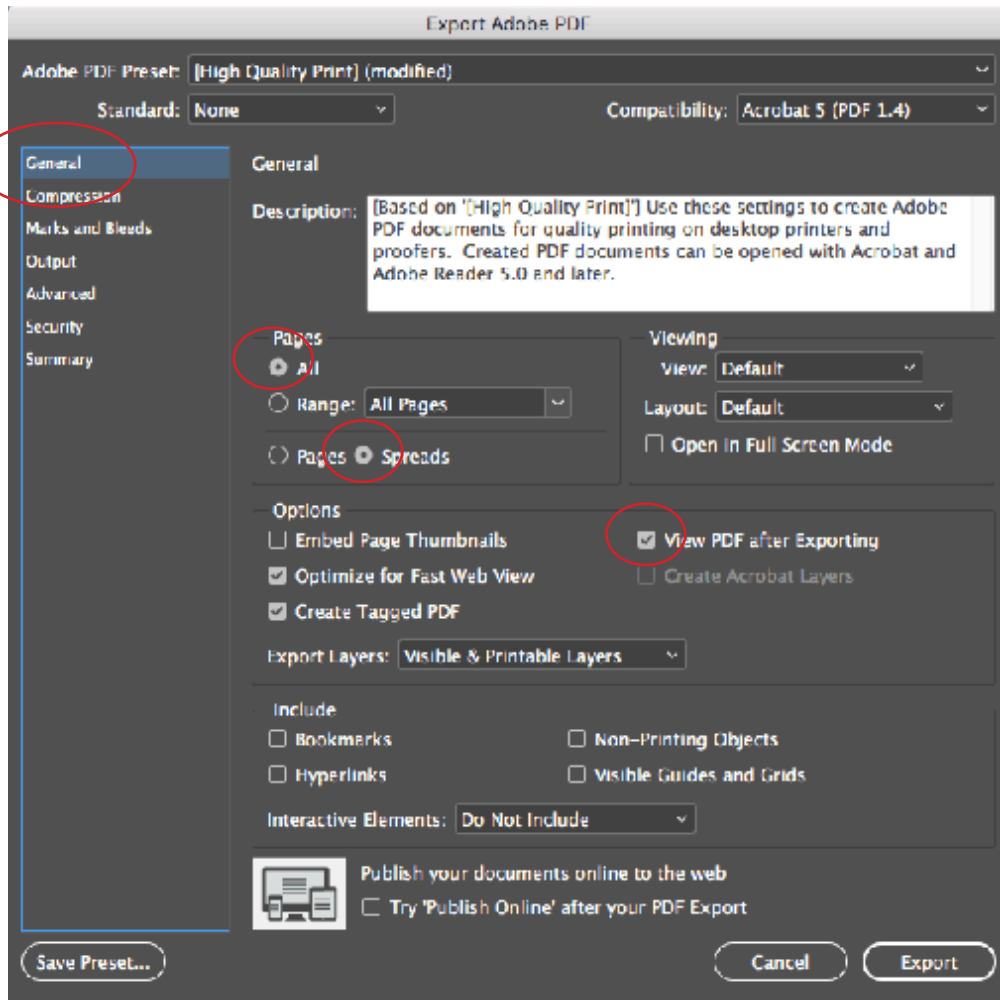


## THE COVER

### PART 2 PRINTING *THE COVER* OF YOUR MAGAZINE:

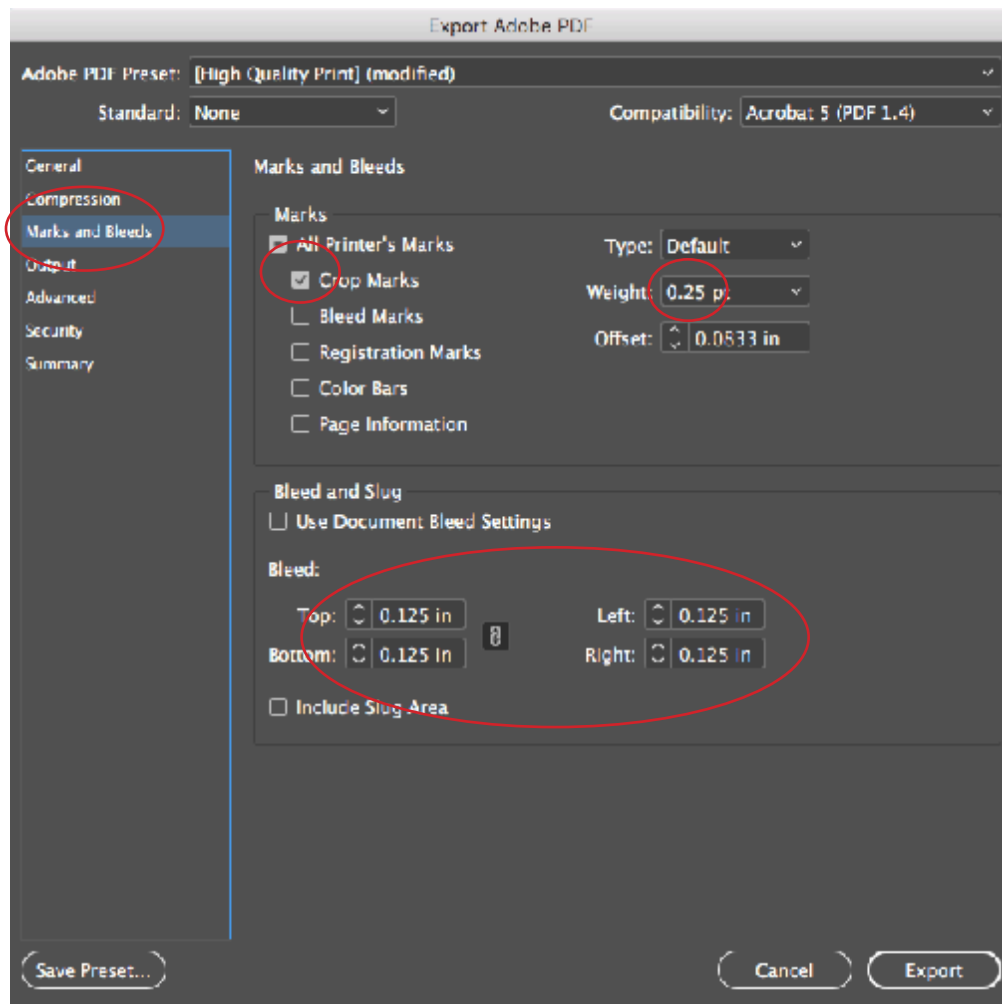
## On your computer

Go to File >> Export >> Adobe PDF (print)



## PART 2 PRINTING THE COVER OF YOUR MAGAZINE:

### On your computer



PART 2 PRINTING THE COVER OF YOUR MAGAZINE:  
At the Docucolor workstation

1. Drag your PDF file to the HELD queue.
2. Select your job and click on Properties (or right click on the file >> Properties)
3. Under the QUICK ACCESS section:

